

DEBURRING AND FINISHING MACHINES

DRY AND WET



GECAM[®]

italian machines and more

Dal **1994**



we design and produce solutions for deburring and grinding metals following our customers' specific requests. A complete offer of products to meet the multiple needs of production following the founding value based on the attention to the high quality of the material 100% made in Italy.

The accurate selection of Italian suppliers located in a radius of 200 km from our company and the constant supervision of the internal production through an attentive planning of each company methods, allow us to respect the quality to guarantee a full satisfaction of the customer.

The technical department, equipped with avantgarde tools, works constantly planning innovative machines in a creative method where the customer is involved in every step. A high qualified team and an efficient consultation and after-sales service allow us to boast a great presence of our products on worldwide market.



*C'è vero progresso
solo quando i vantaggi
di una nuova tecnologia
diventano per tutti.*

"Henry Ford



DEBURRING & FINISHING

Machines designed for deburring, finishing and rounding edge of metal surfaces with useful working width from 300 mm up to 1350 mm

Also suitable for processing flat pieces shaped and with holes resulting from laser cutting, punching and oxy-cutting or plasma.

Each machine can be configured with multiple operating groups, up to 4 internal, to ensure the best result for the process production of the user.

Simple to install and use are built with steel frame welded and normalized which guarantees stability and rigidity to withstand even heavy processing.

The work table with motorized lifting by synchronized movement of 4 trapezoidal screws with double anchoring, allows an adjustment of the thickness of the workpiece from work with fine control +/- 0,1. Conveyor belt in ultra-resistant natural rubber oilproof with automatic centering system.

Variable speed from 0.6 to 6.5 m/min



ITALIAN
MACHINES
AND
MORE

Independent motors for each group to guarantee a complete control of the machine and processing, allowing a great versatility of use. Dust extraction hoods inside of the machine for each single group of work, directly on the production point.

Complete control panel for total management of speeds, thicknesses and working pressures. Alarm diagnostic unit with display for an immediate detection of emergencies and / or breakdowns.

Thickness control system for abrasive belt (GRIT SET) with possibility of memorization of the types most used.

Rubberized pressure rollers, oil and heat resistant, positioned before and after each working group. Idle support rollers at entry and exit from the conveyor belt.

WORKING GROUPS

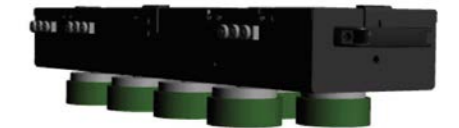
R

Abrasive belt unit with 55° shore rubber contact roller, diameter from 125 mm to 180 mm, equipped with automatic belt centering.



X

Double row of rotating and oscillating brushes, diameter 115 mm. Automatic motorized positioning.



B/b

Cylindrical brush group in scotch brite, diameter from 150 mm to 200 mm.

b - external cylindrical brush group in scotch brite diameter 150 mm.



B4
B8

Carousel unit with 4 or 8 cylindrical brushes diameter 320 mm with double rotation for rounding edges up to 2 mm, even inside the holes.





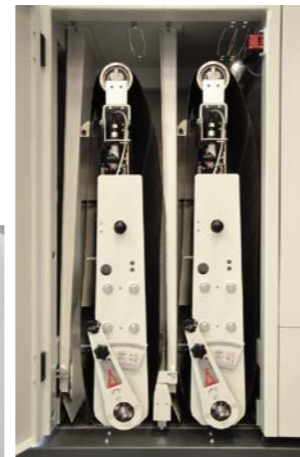
TECHNICAL DATA

Working width	mm 300
Abrasive belt size	mm 320x1900
Working thickness min/max	mm 0,5/170
Suction hoods	mm Ø 160
Suction required	m³/h 2000
Overall dimensions L x P x H	mm 1430x860x2100
Approx weight	from kg 590

- ✓ DEBURRING
- ✓ SATIN FINISH
- ✓ ROUNDING EDGES

CONFIGURABLE ACCESSORIES:

- Variable speed for each working group
- Conveyor belt cleaning brush
- Additional infeed and outfeed rollers



CONFIGURABLE WORKING GROUPS

- R** - Abrasive belt unit with 55° shores rubberized contact roller.
- T** - Unit with single row of rotating and oscillating top brushes diameter mm 115.
- B** - Cylindrical brush group in scotch brite.
- b** - External cylindrical brush in scotch brite.



TECHNICAL DATA

Working width	mm 650
Abrasive belt size	mm 670x2200
Working thickness min/max	mm 0,5/170
Feeding speed	m/min 0,7-6
Suction hoods	mm 120
Suction required	m³/h 2400
Overall dimensions L x P x H	mm 1045x1902x2090
Approx weight	da kg 930

- ✓ DEBURRING
- ✓ SATIN FINISH
- ✓ ROUNDING EDGES

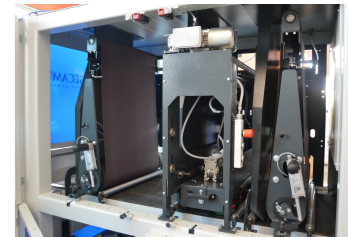
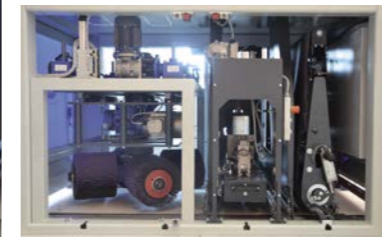
- Touch screen as standard
- Electronic Grit set elettronico as standard
- Variable speed R group as standard

CONFIGURABLE ACCESSORIES:

- Vacuum table
- Conveyor belt cleaning brush
- Powerful motors



Easy zeroing of groups with internal push-button panel



CONFIGURABLE WORKING GROUPS

- R** - Abrasive belt unit with 55° shores rubberized contact roller, diameter mm 125.
- X** - Unit with two rows of rotating and oscillating top brushes (n.8) diameter mm 115.
- B** - Cylindrical brush group in scotch brite, diameter mm 200
- B4** - Carousel group with 4 abrasive brushes diameter 250 mm.
- b** - External cylindrical brush in scotch brite.



TECHNICAL DATA

Working width	mm 650
Abrasive belt size	mm 670x1480
Working thickness min/max	mm 0,5/170
Brush size	mm 66x52x70
Feeding speed	m/min 1-15
Suction hoods	mm 160
Suction required	m³/h 2000
Overall dimensions L x P x H	mm 1100x1350x2150
Approx weight	da kg 830

- ✓ DESLAGGING FROM PLASMA OR OXYCUT
- ✓ ROUNDING EDGES

- Touch screen as standard
- Magnetic table as standard
- Strips brushes for an homogeneous rounding



CONFIGURABLE WORKING GROUPS

- D** - Abrasive belt unit on roller diameter 420 mm 20 shores controlled by pneumatic cylinder.
- C** - Brushes group with 82 brushes on transverse belts, with reverse rotation, with independent motors.



TECHNICAL DATA

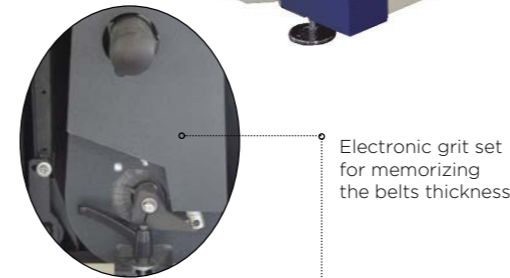
Working width	mm 1100
Abrasive belt size	mm 1120x2200
Working thickness min/max	mm 0,8/170
Feeding speed	m/min 0,7-6
Suction hoods	mm 160
Suction required	m³/h 6000
Overall dimensions L x P x H	mm 1300x2100x2180
Approx weight	da kg 960

- ✓ DEBURRING
- ✓ FINISHING
- ✓ ROUNDING EDGES

- Touch screen as standard
- Electronic grit set as standard
- Variable speed on R group as standard

CONFIGURABLE ACCESSORIES

- Vacuum table
- Conveyor belt cleaning brush
- Powerful motors



Electronic grit set for memorizing the belts thickness



CONFIGURABLE WORKING GROUPS

- R** - Abrasive belt unit with 55° shores rubberized contact roller, diameter mm 180.
- X** - Unit with two rows of rotating and oscillating top brushes (n. 16) diameter mm 115.
- B** - Cylindrical brush group in scotch brite, diameter mm 200
- b** - External cylindrical brush in scotch brite, diameter 150 mm



TECHNICAL DATA

Working width	mm 1350
Abrasive belt size	mm 1370x2200
Working thickness min/max	mm 0,5/170
Feeding speed	m/min 0,7-6
Suction hoods	mm 200
Suction required	m³/h 6000
Overall dimensions L x P x H	mm 1750x2100x2180
Approx weight	da kg 1590

- ✓ DEBURRING
- ✓ FINISHING
- ✓ ROUNDING EDGES

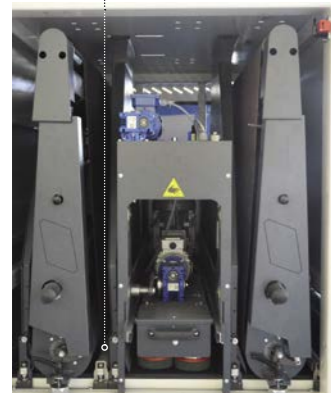
- Touch screen di serie
- Grit set elettronico di serie
- Velocità variabile gruppo R di serie

EVEN MORE PERFORMING WITH:

- Vacuum table
- Magnetic track
- Operator piece return
- Conveyor belt cleaning brush



Pressure rollers before and after every working group



CONFIGURABLE WORKING GROUPS

- R** - Abrasive belt unit with 55° shores rubberized contact roller, diameter mm 180.
- X** - Unit with two rows of rotating and oscillating top brushes (n. 20) diameter mm 115.
- B** - Cylindrical brush group in scotch brite, diameter mm 200
- b** - External cylindrical brush in scotch brite, diameter 150 mm

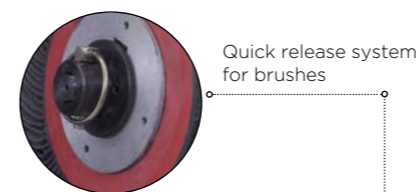


TECHNICAL DATA

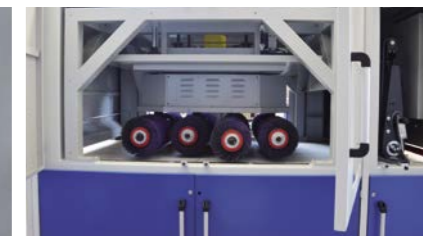
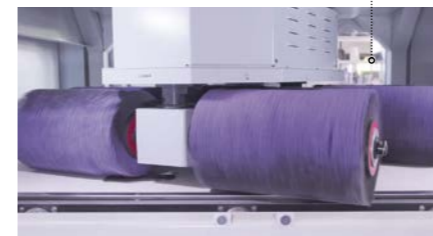
Working width	mm 1300
Abrasive belt size	mm 1370x2200
Brushes dimensions	mm 300x532
Brushes rotation speed	rpm 200-800
Working thickness min/max	mm 0,4/120
Suction required	l/min 12
Overall dimensions L x P x H	mm 2510x1910x2200
Approx weight	da kg 2400

- ✓ ROUNDING EDGES
- ✓ DESLAGGING
- ✓ DEBURRING
- ✓ SATIN FINISH
- ✓ OXIDE REMOVAL

- Rotary group with cylindrical brushes for a homogeneous finish
- Touch screen a standard
- Vacuum table
- Coveyor belt cleaning brush
- Side windows for greater control during processing



Quick release system for brushes



CONFIGURABLE WORKING GROUPS

- R** - Abrasive belt unit with 55° shores rubberized contact roller, diameter mm 180.
- BB** - Rotary group with 8 abrasive brushes diameter 300 mm.



TECHNICAL DATA

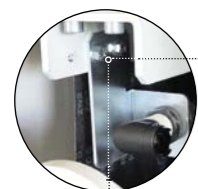
FALSTAFF GM 6

Working width	mm 600
Abrasive belt size	mm 635x1524
Working thickness min/max	mm 0,5/120
Feeding speed	m/min 1,5-8
Suction hood	mm 120
Suction required	m³/h 2000
Overall dimensions L x P x H	mm 1110x1500x1940
Approx weight	da kg 525

STIFFELIO GM 11

Working width	mm 1100
Abrasive belt size	mm 1120x1524
Working thickness min/max	mm 0,5/130
Feeding speed	m/min 2-9
Suction hood	mm 120
Suction required	m³/h 2000
Overall dimensions L x P x H	mm 1650x1150x2000
Approx weight	da kg 800

- ✓ DEBURRING
- ✓ FINISHING



Belt presence detection photocell



CONFIGURABLE WORKING GROUPS

R - Abrasive belt unit with 125 mm diameter contact roller with heat-resistant nitrile rubber coating with helical groove and harness 55° shore

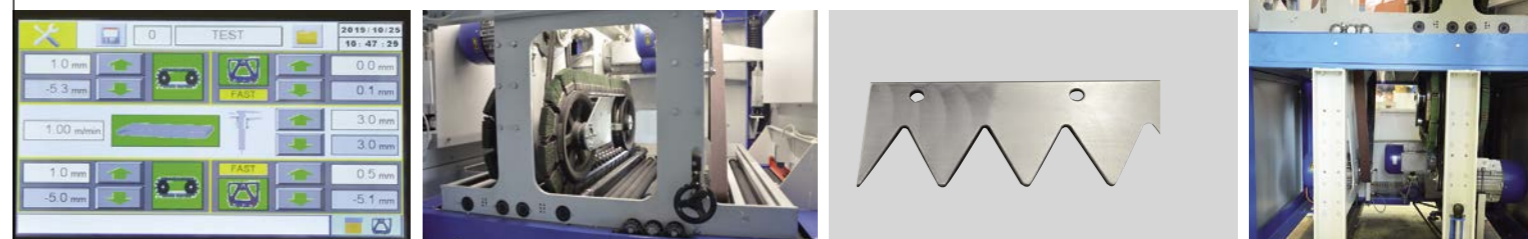


TECHNICAL DATA

Working width	mm 600
Abrasive belt size	mm 2500x50
Brushes size	mm 66x32
Working thickness min/max	mm 0,5/80
Feeding speed	m/min 0,7-6
Suction hood	m³/h 6000
Suction required	mm 1680x1750x2100
Overall dimensions L x P x H	da kg 2000
Approx weight	

- ✓ ROUNDING EDGES
- ✓ DEBURRING
- ✓ FINISHING

- Fixed bench with motorized rollers table
- Simultaneous processing on both sides
- Transversal brush groups
- Touch screen as standard



CONFIGURABLE WORKING GROUPS

R - Transversal abrasive belt unit with pressure pad to facilitate the entry of pieces with independent self-breaking motor. Pneumatic tensioning system

C - Cross belt unit with strips brushes for a perfect rounding on all the sides of the sheet even inside the holes

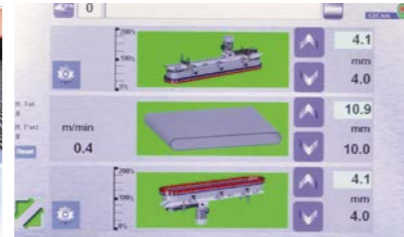
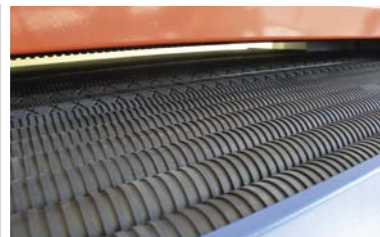


TECHNICAL DATA

Working width	mm 1300
Strips brushes quantity	150
Brushes sizes	mm 60x50
Working thickness min/max	0,5-90
Feeding speed	m/min 0,7-6
Suction hood	mm 180
Suction required	m³/h 4000
Overall dimensions L x P x H	mm 2550x1250x1950
Approx weight	da kg 2200

- ✓ ROUNDING EDGES
- ✓ OXIDE REMOVAL

- Simultaneous processing on both sides
- Crossed belt system with strip brushes
- Motorized rollers table



CONFIGURABLE WORKING GROUPS

C - Cross belt unit with strips brushes for a perfect rounding on all the sides of the sheet even inside the holes

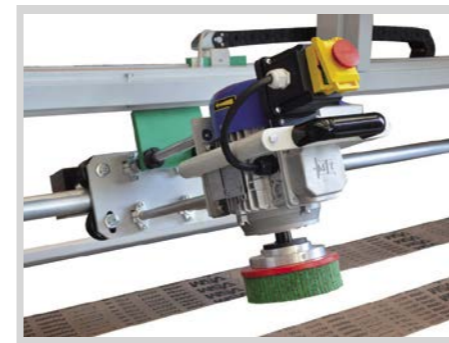
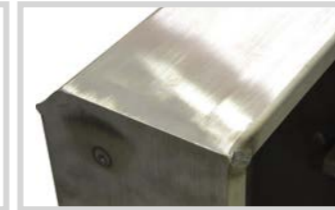


TECHNICAL DATA

Working table size	mm 2500/3000x800
Abrasive belt size	mm 120 x 8000/9000
Z table stroke	mm 600
Max piece weight on table	kg 100
Max weight on locking system	kg 8
Max weight on manipulator	kg 37
Overall dimensions L x P x H	mm 1000x3750x2200
Approx weight	da kg 790

- ✓ DEBURRING
- ✓ SATIN FINISH

- Double crossed belt
- Configurable with roller or brush for multiple processes
- Pneumatic tensioning of abrasive belts
- Suction cup handling system available for shaped pieces
- Accessories storage warehouse



CONFIGURABLE WORKING GROUPS

R - Double belts unit with pneumatic tensioning system, high flexibility to adapt to all conditions of the pieces



TECHNICAL DATA

Working table	mm 800x1300
Working height	mm 945
Vacuum area	mm 250x350
Motor Power	kW 0.75
Brush diameter	mm 150
Pieces max thickness	mm 150

- ✓ DEBURRING
- ✓ SATIN FINISH
- ✓ ROUNDING EDGES

- Double tool on 180° tilting swinging arm
- Vacuum table
- Suction hood inside
- Tool activation buttons on handlebar



Release and brush positioning piston



CONFIGURABLE WORKING GROUPS

T - Top brush unit quick release system, diameter 150 mm



CUB 30BB

TECHNICAL DATA

Brushes diameter	mm 180
Working width	mm 300
Feeding speed	m/min 1-7
Piece minimum lenght	mm 100
Working thickness min/max	mm 0,5/250
Overall dimensions L x P x H	mm 1150x750x1200
Approx weight	kg 385

CUB 60BB

TECHNICAL DATA

Brushes diameter	mm 210
Working width	mm 600
Feeding speed	m/min 1-7
Piece minimum lenght	mm 100
Working thickness min/max	mm 0,5/250
Overall dimensions L x P x H	mm 1400x1200x1700
Approx weight	kg 700

- ✓ DEBURRING
- ✓ SATIN FINISH

- Brushes with independent pressure regulation
- Conveyor belt variable speed
- Independent motors



CONFIGURABLE WORKING GROUPS

B - Cylindrical brush unit in scotch brite



TECHNICAL DATA

Working width	mm 300
Abrasive belt size	mm 320x1900
Working thickness	mm 140
Feeding speed min/max	m/min 5/10
Overall dimensions	mm 1430x860x2100
Approx weight	da kg 660
Working groups	max 2

- ✓ DEBURRING
- ✓ SATIN FINISH
- ✓ ROUNDING EDGES

- Vasca di raccolta acqua e filtraggio dei fanghi
- Sistema di asciugatura pezzi in uscita
- Velocità variabile nastro trasportatore

Spruzzatori
d'acqua diretti
sull'utensile
di lavoro



CONFIGURABLE WORKING GROUPS

- R** - Abrasive belt unit with 55° shores rubberized contact roller, diameter mm 125.
- T** - Unit with single row of rotating and oscillating top brushes diameter mm 115
- B** - Cylindrical brush group in scotch brite, diameter mm 150

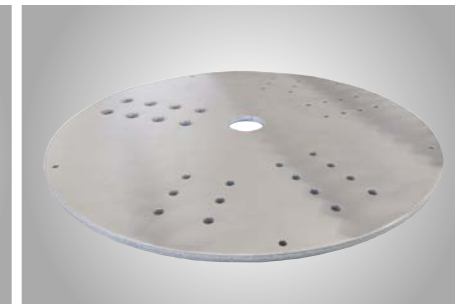
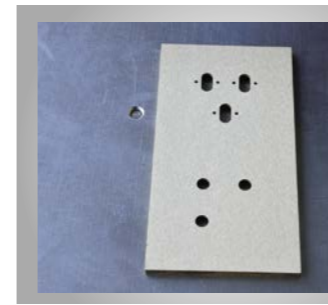


TECHNICAL DATA

Working width	mm 650
Abrasive belt size	mm 650x1900
Working thickness min/max	mm 0,5/140
Approx weight	kg 920
Overall dimensions	2300x1300x2000

- ✓ DEBURRING
- ✓ SATIN FINISH
- ✓ FINISHING

- Fixed bench at 900 mm and thickness adjustment with movement of the working groups
- Variable feeding speed
- Automatic filtration system for cleaning
- Max 3 working groups
- Stainless steel kit for parts in contact with water



CONFIGURABLE WORKING GROUPS

- R** - Abrasive belt unit with 55° shores rubberized contact roller, diameter mm 125.
- T** - Unit with single row of rotating and oscillating top brushes diameter mm 115
- B** - Cylindrical brush group in scotch brite, diameter mm 150
- b** - External cylindrical brush in scotch brite, diameter mm 150



TECHNICAL DATA

Working width	mm 1300
Abrasive belt size	mm 0,8 to 140
Working thickness min/max	2200x1320
Variable feeding speed	m/min 0,5 to 10
Approx weight	kg 4000
Overall dimensions	mm 2300x1600x2380

- ✓ DEBURRING
- ✓ SATIN FINISH
- ✓ ROUNDING EDGES

- External sludge collection tank
- Fixed bench at 900 mm
- Configurable with touch screen
- Independent management of water sprinklers

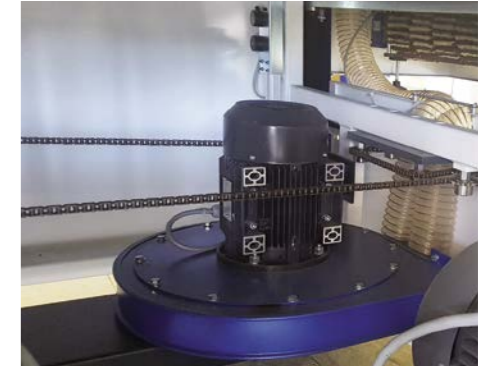
Each model can be configured according to the needs of the production process both with standard working groups or with a series of additional accessories.



ADDITIONAL ENTRY AND EXIT ROLLER



MAGNETIC TRACK



VACUUM SYSTEM



CONVEYOR BELT CLEANING BRUSH



TOUCH SCREEN

SAMPLES WORKED



CONFIGURABLE WORKING GROUPS

- R** - Abrasive belt unit with 55° shores rubberized contact roller, diameter mm 125.
- T** - Unit with single row of rotating and oscillating top brushes diameter mm 115.
- B** - Cylindrical brush group in scotch brite, diameter mm 150
- b** - External cylindrical brush in scotch brite, diameter mm 150



BRUSHES

TOP GREEN BRUSH



Top brush scotch brite and canvas suitable for rounding edge, available in different grits depending on the required processing

STEEL WIRE BRUSH



Intertwined steel wires top brush for removing oxide on the edges

PIN BRUSH



Top brush with steel pins fixed on a flexible bearing suitable for removing slag on the edges after plasma or oxy-fuel cutting

SYNTHETIC TOP BRUSH



Top brush with synthetic abrasive and canvas for rounding edges on wet machines that prevent the penetration of water and therefore the kneading of the canvas

ABRASIVE B BRUSH



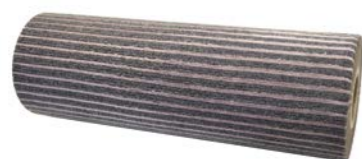
Cylindrical brush in abrasive canvas with ceramic grit, which guarantees a very high degree of removal, used in the rotary group mainly for strong rounding edge even inside the hole

STRIP BRUSH



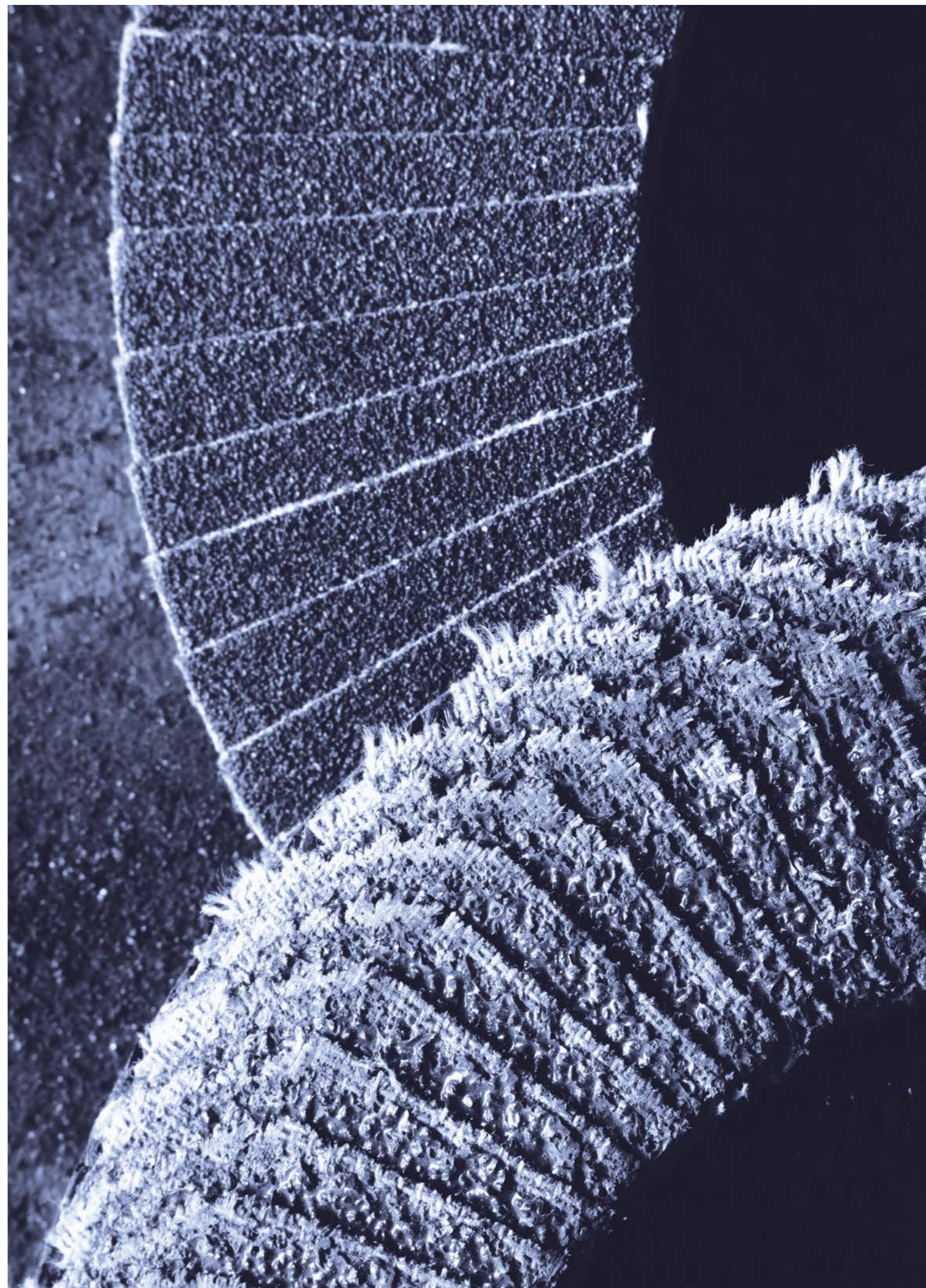
Strip brush in scotch brite and very flexible abrasive canvas strips for edge rounding, available in different grits and also without scotch brite for an even more aggressive rounding.

SCOTCH BRITE B BRUSH



Cylindrical brush in scotch brite for surface finish. A different result depending on the type of scotch brite.

The top brushes have a quick release system which allows considerable time savings during tools change.





GECAM s.r.l.

Via M. Sacchi, 3 - Vicofertile
43126 - Parma - Italia
Tel. +39 0521798353

gecam@gecam.com

gecam.com

